

# Khaled Juffali Industrial Company



# Group Chairman



**Khaled Juffali**

- Khaled Juffali comes from a most respected business family in Saudi Arabia. He is Chairman of the Saudi/German trade group.
- Among other entrepreneurs, he plays a key role in the development of Saudi Arabia
- Business focus on joint ventures with leading global partners.
- Strength lies in combining a solid financial foundation together with an excellent network of multi-national partnerships

**E.A. Juffali & Bros.  
Managing Partner**



- E. A. Juffali & Brothers was established in 1946 by the three brothers Ebrahim, Ali and Ahmed Abdullah Juffali.
- Over the last 7 decades, Juffali has been instrumental in making Saudi Arabia the thriving modern economy it is today, even setting up the electric power supply and telecommunications to some of Saudi Arabia's major cities, during the initial development of the Kingdom.
- Over the years Juffali continued to grow with the nation, developing alliances with many world-leading brands. Today, there is hardly a sector in which Juffali is not represented and our list of international partners reads like a 'who's who' of market leaders.

**Khaled Juffali Co.  
Chairman**



- Company established in 2004
- Private limited company, registered in KSA
- Owned 100% by Sh. Khaled Juffali, a Saudi national
- Mandate to invest in businesses across the Middle East
- Operates in the style of a private equity investor
- Comfortable at significant minority position or majority stake
- Funded via owner equity, partner equity and bank credit lines

## Vision

To be recognized as a reliable source for ensuring business success in delivering world class engineered products, services and turn-key solutions at the most competitive price with premium quality and reliability.

## Mission

To become an exemplary engineering, contracting and manufacturing company known for its project management skills, integrity and unflinching commitment of its entrepreneurial owner-employees, towards customers and other business associates providing best value to its stakeholders.

## Core Values

- Trust
- Honesty
- Integrity
- Courage
- Respect and dignity
- Prosperity for all stakeholders including employees



# Group Strength



## Construction



VISION ETIMAAD  
Contracting Company Limited



SULZER



## Healthcare



Arabio



## Insurance



## Associates



## Philanthropy



SHEFA  
Fund

## Automotive



## International



## Energy

SICP  
STRATEGIC INDUSTRIAL  
CAPITAL PARTNERS LLP



## Maritime

SEA PROS

## Aviation



## Real Estate

JUFFALI  
COMPOUND  
Al KHOBAR



# Clientele / Registrations



Saudi Aramco



Saudi Aramco Mobil Refinery Company



Saudi Aramco Shell Refinery Company



Saudi Aramco Total Oil Refinery & Petrochemical Co.



Saudi Aramco Base Oil Company



Al-Khafji Joint Operation



Rabigh Refining & Petrochemical Co.



SABIC



Sahara Petrochemicals Company



Saudi International Petrochemical Company



Advanced Petrochemicals Company



Farabi Petrochemicals Company



Methanol Chemicals Company



Dow Chemical Company



Jubail Chemical Industries Company



Saudi Chevron Phillips Company



National Industrialization Company (Tasnee)



Saudi Arabian Mining Co.



Saudi Electricity Company



Marafiq



Riyadh Cement Company



Qassim Cement Company



# Clientele / Registrations



Royal Commission for Jubail and Yanbu (RCJY)  
الهيئة الملكية للجبيل وينبع

Royal Commission for Jubail & Yanbu



Fluor Corporation



JACOBS



BECHTEL



Pall Corporation



Technip



SNC-LAVALIN

SNC Lavalin



ABEINSA



Dragados Gulf Construction Co. Ltd.



TEKFEN CONSTRUCTION

Tekfen Construction



LINDE



Hyundai Heavy Industries Company



Samsung C&T Corporation



Hyundai Engineering Company Ltd.



Hyundai Engineering & Construction Company



Daelim Industrial Company



SK Engineering & Construction



Doosan Heavy Industries



Fives Group



SINOPEC



SEPCO III



China Communications Construction Company



China Harbour Engineering Company



Nesma & Partners Contracting Company



JGC Corporation

# Company History



Conversion to 100% Saudi Company



VISION ETIMAAD  
Contracting Company Limited



Saudi Arabian General Investment Authority  
SAGIA



شركة خالد الجفالي  
Khalid Jufali Co.



ETIMAAD

Regional Operational Establishment in Jubail Industrial City



Saudi Arabian General Investment Authority  
SAGIA



ARABIAN ETIMAAD

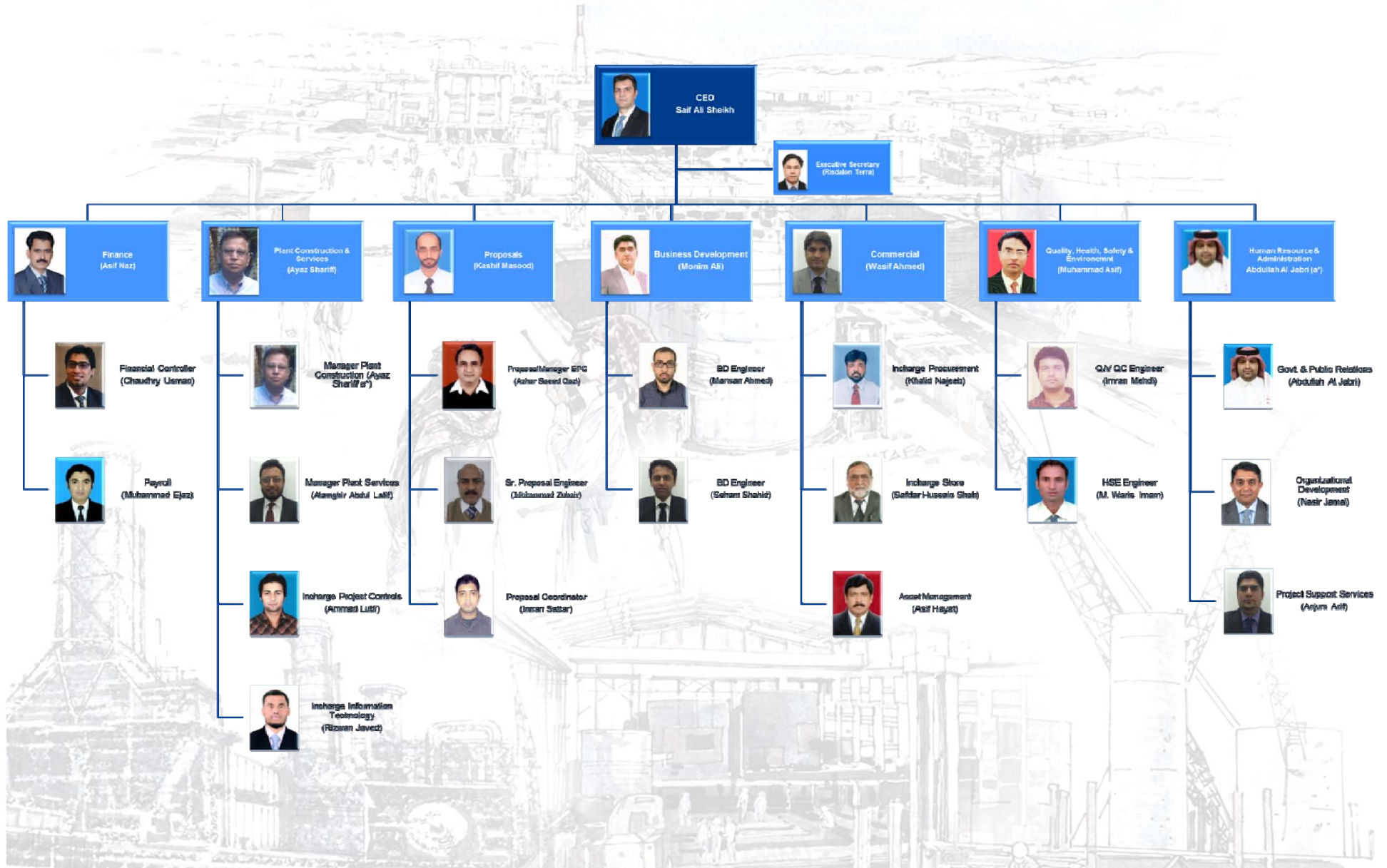


VISION  
Contracting Company Limited



Regional Operations Expansion in Jubail Industrial City

# Organization Chart





# Areas of Services



## Electro-Mechanical Construction



- Detailed Engineering Design
- Procurement
- General Field Construction
- Installation of Resin Piping
- Field Testing & Pre-commissioning

## Fabrication



- General Shop Fabrication
- Piping Spools Prefabrication
- Tanks Fabrication

## Maintenance



- Revamp / Retrofit
- Shutdown & Turnarounds
- Plant Maintenance & Testing

## MEP



- Supply
- Construction
- Testing & Commissioning

# Industrial Sectors Under Focus



Oil and Gas



Chemical /  
Petrochemical



Power



Alternate Energy



Fertilizer



Cement



Water Treatment



Infrastructure



# Projects Locations



# Quality, Health, Safety & Environment (QHSE) Policy



## Quality, Health, Safety & Environment (QHSE) Policy

Khaled Juffali Industrial Company (KJIC) is a premier Project Management, Engineering, Procurement, Plant Construction and Maintenance Company.

At KJIC, contributing towards QHSE global, national & organizational objectives is an uncompromised value for our business conduct. KJIC team members make an individual commitment to do everything to ensure minimal harm to people, environment and assets in achieving our QHSE performance objectives for sustainable development. True to its pioneering spirit, KJIC relies on the rich experience, diversity and entrepreneurial attitude of its employees in achieving complete customer satisfaction and believes in equitable sharing of wealth with its principal resources including employees.

It is KJIC's policy to:

- Develop and integrate management system framework by incorporating QHSE standards in every process related to our business.
- Assign accountability to all management levels.
- Understand and comply with applicable legal, regulatory & statutory standards and other requirements.
- Apply systematic and measurable approach to continually improve upon our QHSE culture and performance.
- Implement structured training programs and monitor its effectiveness to retrain staff and seek opportunities for competence enhancement of stakeholders.
- Establish critical QHSE parameters to monitor QHSE performance of our system and improve upon through consistent feedback, analysis & benchmarking most recognized industrial norms to stand out in the market as a leader in the field.
- Take lead in controlling and mitigating potential risks associated with people, land, air, ecology and assets.
- Communicate this policy to stakeholders and encourage them to participate in QHSE process performance improvement initiatives and reward individual and team performance consistently.
- We are strongly committed to prevention of injury, ill health and continual improvement of our OH&S management system and OH&S performance.
- We believe that all accidents are preventable. We continuously strive for zero defects preferably through proactive measures.
- Living by the values of KJIC we contribute in cultural development through team works

KJIC/QHSE Policy  
Rev: 01, Jan 25, 2015

  
Saif Ali Sheikh  
Chief Executive Officer

# Certifications



## ABS Quality Evaluations

### Certificate Of Conformance

This is to certify that the Quality Management System

Arabian Etimaad Industrial Company

Arabian Etimaad Industrial Company

P.O. Box 35037

Jubail Industrial City

Jubail

Kingdom of Saudi Arabia

has been assessed by ABS Quality Evaluations, Inc. and found to be in conformance with

**ISO 9001:2008**

The Quality Management System is applicable to:

PROJECT MANAGEMENT, ENGINEERING, PROCUREMENT, PLANT CONSTRUCTION, ELECTRICAL & INSTRUMENTATION SERVICES, PLANT MAINTENANCE SERVICES, SUPPLY OF ENGINEERING PRODUCTS FOR OIL & GAS, CHEMICALS & PETROCHEMICAL WATER TREATMENT PLANT & OTHER INDUSTRIES, INFRASTRUCTURE PROJECTS.

Certificate No: 45686  
 Original Certification Date: 04 March 2011  
 Effective Date: 04 March 2014  
 Expiration Date: 03 March 2017  
 Revision Date: 05 March 2014

Validity of this certificate is based on the periodic audits of the management system defined by the above scope and is contingent upon prompt, written notification to ABS Quality Evaluations, Inc. of significant changes to the management system or components thereof.  
 ABS Quality Evaluations, Inc. 16855 Northchase Drive, Houston, TX 77060, U.S.A.  
 Validity of this certificate may be confirmed at [www.abs-qe.com/cert\\_validation](http://www.abs-qe.com/cert_validation)  
 Copyright 2011 ABS Quality Evaluations, Inc. All rights reserved.

## ABS Quality Evaluations

### Certificate Of Conformance

This is to certify that the Environment Management System of

Arabian Etimaad Industrial Company (A)

Arabian Etimaad Industrial Company

P.O. Box 35037

Jubail Industrial City

Jubail

Kingdom of Saudi Arabia

has been assessed by ABS Quality Evaluations, Inc. and found to be in conformance with the

**ISO 14001:2004**

The Environment Management System is applicable to:

PROJECT MANAGEMENT, ENGINEERING, PROCUREMENT, PLANT CONSTRUCTION, ELECTRICAL & INSTRUMENTATION SERVICES, PLANT MAINTENANCE SERVICES, SUPPLY OF ENGINEERING PRODUCTS FOR OIL & GAS, CHEMICALS & PETROCHEMICAL WATER TREATMENT PLANT & OTHER INDUSTRIES, INFRASTRUCTURE PROJECTS.

Certificate No: 45687  
 Original Certification Date: 15 March 2011  
 Effective Date: 07 March 2014  
 Expiration Date: 14 March 2017  
 Revision Date: 07 March 2014

Validity of this certificate is based on the periodic audits of the management system defined by the above scope and is contingent upon prompt, written notification to ABS Quality Evaluations, Inc. of significant changes to the management system or components thereof.  
 ABS Quality Evaluations, Inc. 16855 Northchase Drive, Houston, TX 77060, U.S.A.  
 Validity of this certificate may be confirmed at [www.abs-qe.com/cert\\_validation](http://www.abs-qe.com/cert_validation)  
 Copyright 2011 ABS Quality Evaluations, Inc. All rights reserved.

## ABS Quality Evaluations

### Certificate Of Conformance

This is to certify that the Health and Safety Management System of

Arabian Etimaad Industrial Company (AEIC)

Arabian Etimaad Industrial Company

P.O. Box 35037

Jubail Industrial City

Jubail

Kingdom of Saudi Arabia

has been assessed by ABS Quality Evaluations, Inc. and found to be in conformance with the requirements set forth by:

**OHSAS 18001:2007**

The Health and Safety Management System is applicable to:

PROJECT MANAGEMENT, ENGINEERING, PROCUREMENT, PLANT CONSTRUCTION, CIVIL, MECHANICAL, ELECTRICAL & INSTRUMENTATION SERVICES, PLANT MAINTENANCE SERVICES, MANUFACTURING & SUPPLY OF ENGINEERING PRODUCTS FOR OIL & GAS, CHEMICALS & PETROCHEMICAL, POWER, FERTILIZER, CEMENT, WATER TREATMENT PLANT & OTHER INDUSTRIES, INFRASTRUCTURE PROJECTS.

Certificate No: 45688  
 Original Certification Date: 15 March 2011  
 Effective Date: 14 March 2014  
 Expiration Date: 14 March 2017  
 Revision Date: 14 March 2014

*Alex Weissberg*

Alex Weissberg, President



Validity of this certificate is based on the periodic audits of the management system defined by the above scope and is contingent upon prompt, written notification to ABS Quality Evaluations, Inc. of significant changes to the management system or components thereof.  
 ABS Quality Evaluations, Inc. 16855 Northchase Drive, Houston, TX 77060, U.S.A.  
 Validity of this certificate may be confirmed at [www.abs-qe.com/cert\\_validation](http://www.abs-qe.com/cert_validation)  
 Copyright 2011 ABS Quality Evaluations, Inc. All rights reserved.

ASME Certifications U, S, A, PP & R under acquisition

KJIC operates with Integrated Management System with management and employee commitment thus forming the hallmark of the program resulting in a safety record with zero LTI till date from inception.

INTEGRATED  
MANAGEMENT SYSTEM

*Certified Management  
System:*

- ISO 9001:2008
- ISO 14001:2004
- OHSAS 18001:2007
- Comprehensive Procedures

# Process Based Integrated Management System



# IMS Standard Procedures

ISO 9001:2008, ISO 14001:2004 & OHSAS 18001:2007



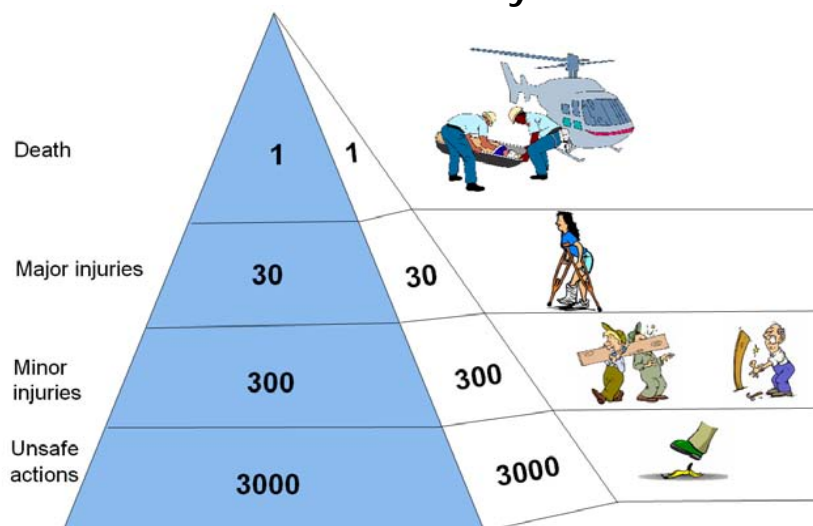
Control of IMS Documents	KJIC-QA&QC-SP-01
Integrated Management System Audits	KJIC-QA&QC-SP-02
Preventive And Corrective Actions	KJIC-QA&QC-SP-03
Control Of Nonconforming Products	KJIC-QA&QC-SP-04
Executive Management Reviews	KJIC-QA&QC-SP-05
Consultation and Communication of IMS	KJIC-QA&QC-SP-06
IMS Records	KJIC-QA&QC-SP-10
HSE Hazard Identification, Risk Assessment and Control	KJIC-HSE-SP-04
HSE Orientation and Training	KJIC-HSE-SP-02
Incident/Accident Reporting, Investigation and Analysis	KJIC-HSE-SP-03
Legal and other Requirements	KJIC-HSE-SP-05
Emergency Preparedness and Response	KJIC-HSE-SP-06
HSE Monitoring and Control	KJIC-HSE-SP-07



# Safety is All About Culture



## Heinrich's Theory



Investigation and reporting of:

Death cases

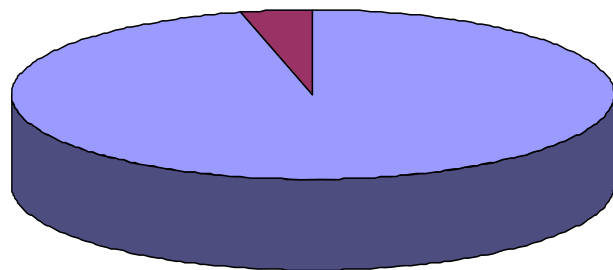
Accident frequency rate (AFR)  
Accident severity rate (ASR)

Cases of minor accidents  
(AFR minor)

Cases of near misses

A certain level of incidents has statistically been proven to lead to serious major injuries and at a certain moment to a situation of death.

4% of incidents happen  
due to unsafe conditions



96% of incidents happen due to unsafe  
behavior

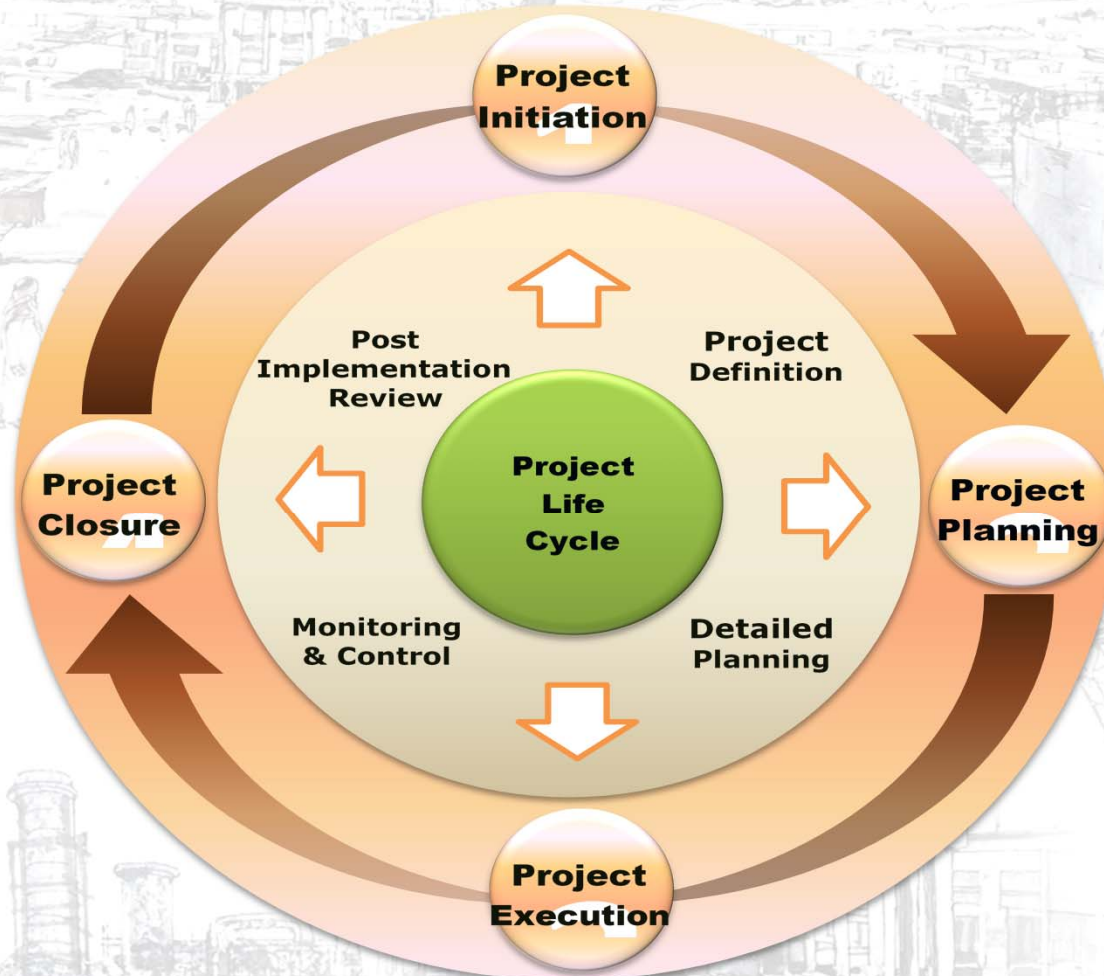
Analysis of actions, minor incidents and  
continuous training are key  
to improvement - it needs to become  
part of our culture again

# HSE Statistics

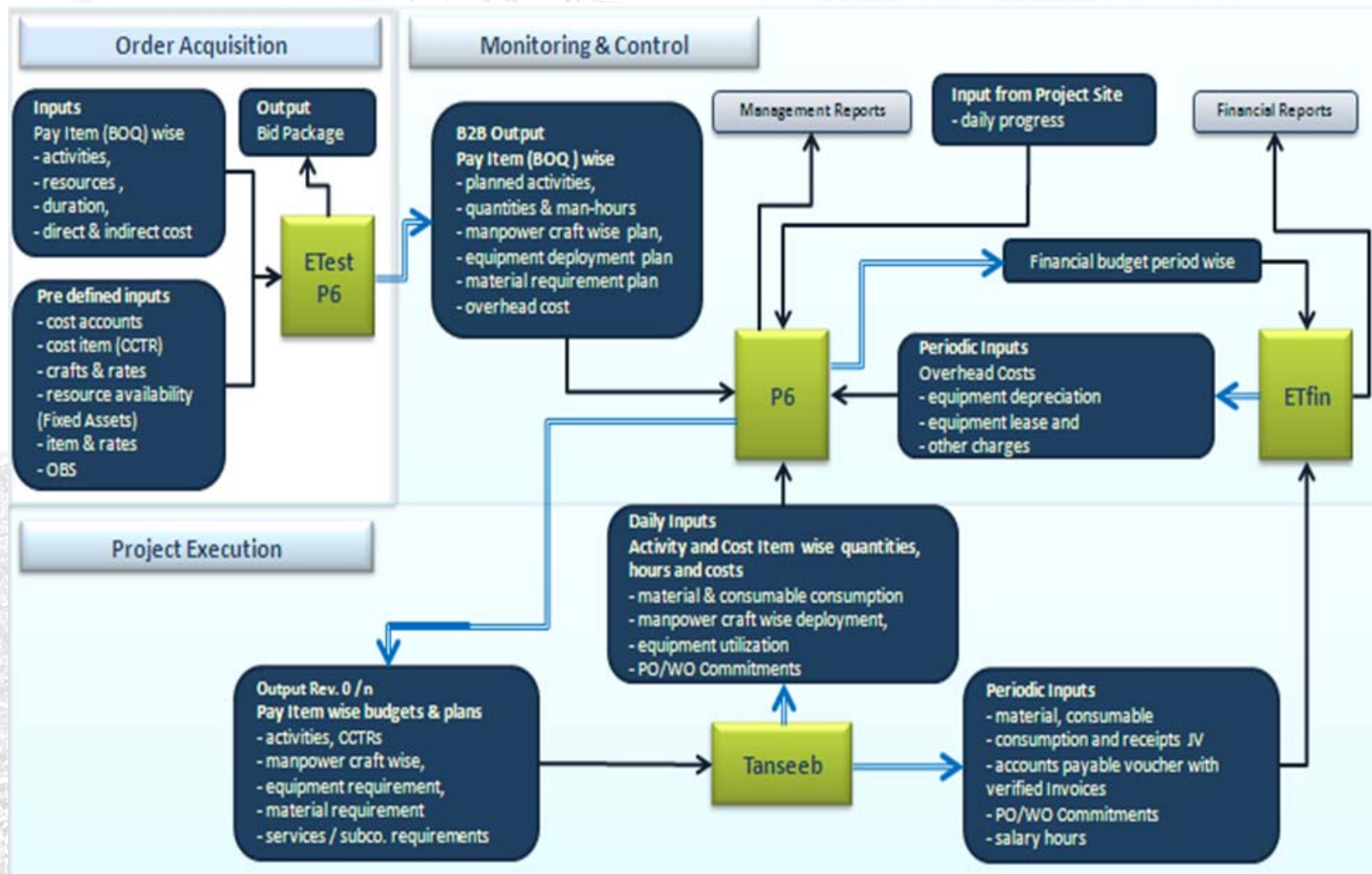


PROJECTS	PROJECTS TO DATE MANHRS (HRS)	FATAL	NEAR MISS	OSHA RECORDABLE INJURIES						TOTAL FIRST AID CASES	RATE FIRST AID CASES
				LOST TIME		RESTR'D WORK	MEDICAL T. MENT	TOTAL RECORDABLE	RATE PER 200 K HRS		
				NOS	RATE						
Luberef Project	232,090	0	0	0	0	0	0	0	0.0000	0	0.0000
Winteco-Tanks	119,743	0	3	0	0	0	0	0	0.0000	5	8.3512
Nesma-Tanks	72,090	0	1	0	0	0	0	0	0.0000	1	2.7743
MMG-Piping	116,640	0	0	0	0	0	0	0	0.0000	2	3.4294
Push Project	45,732	0	2	0	0	0	0	0	0.0000	0	0.0000
SASREF(JGC)	23,400	0	2	0	0	0	0	0	0.0000	0	0.0000
SEPCO-RABEC	991,514	0	32	0	0	0	0	0	0.0000	1	0.2017
Head Office/PO	729,658	0	0	0	0	0	0	0	0.0000	0	0.0000
Styrene Pipeline	62,859	0	3	0	0	0	0	0	0.0000	2	6.3634
JCP-Piping	82,193	0	0	0	0	0	0	0	0.0000	0	0.0000
MMG-Stacks	154,721	0	3	0	0	0	0	0	0.0000	2	2.5853
WesTech-Tanks	55,142	0	2	0	0	0	0	0	0.0000	0	0.0000
Tamimi-Vessels	2,017	0	0	0	0	0	0	0	0.0000	0	0.0000
Nesma-Piping	523,712	0	0	0	0	0	0	0	0.0000	0	0.0000
RKPP	1,928,930	0	27	0	0	0	0	0	0.0000	12	0.7257
SCP-Benzene line	21,338	0	0	0	0	0	0	0	0.0000	2	0.0000
Maaden Project	573,309	0	0	0	0	0	0	0	0.0000	2	0.7576
RC-Azmeel-Tanks	108,019	0	0	0	0	0	0	0	0.0000	1	0.0000
Haram Project	351,624	0	6	0	0	0	0	0	0.0000	3	0.0000
Aramco-PALL-Project	128,452	0	6	0	0	0	0	0	0.0000	6	9.3400
Man Power-VECC/JGC	81,092	0	0	0	0	0	0	0	0.0000	0	0.0000
<b>TOTAL</b>	<b>6,404,275</b>	<b>0</b>	<b>87</b>	<b>0</b>	<b>0</b>	<b>0</b>	<b>0</b>	<b>0</b>	<b>0.0000</b>	<b>39</b>	

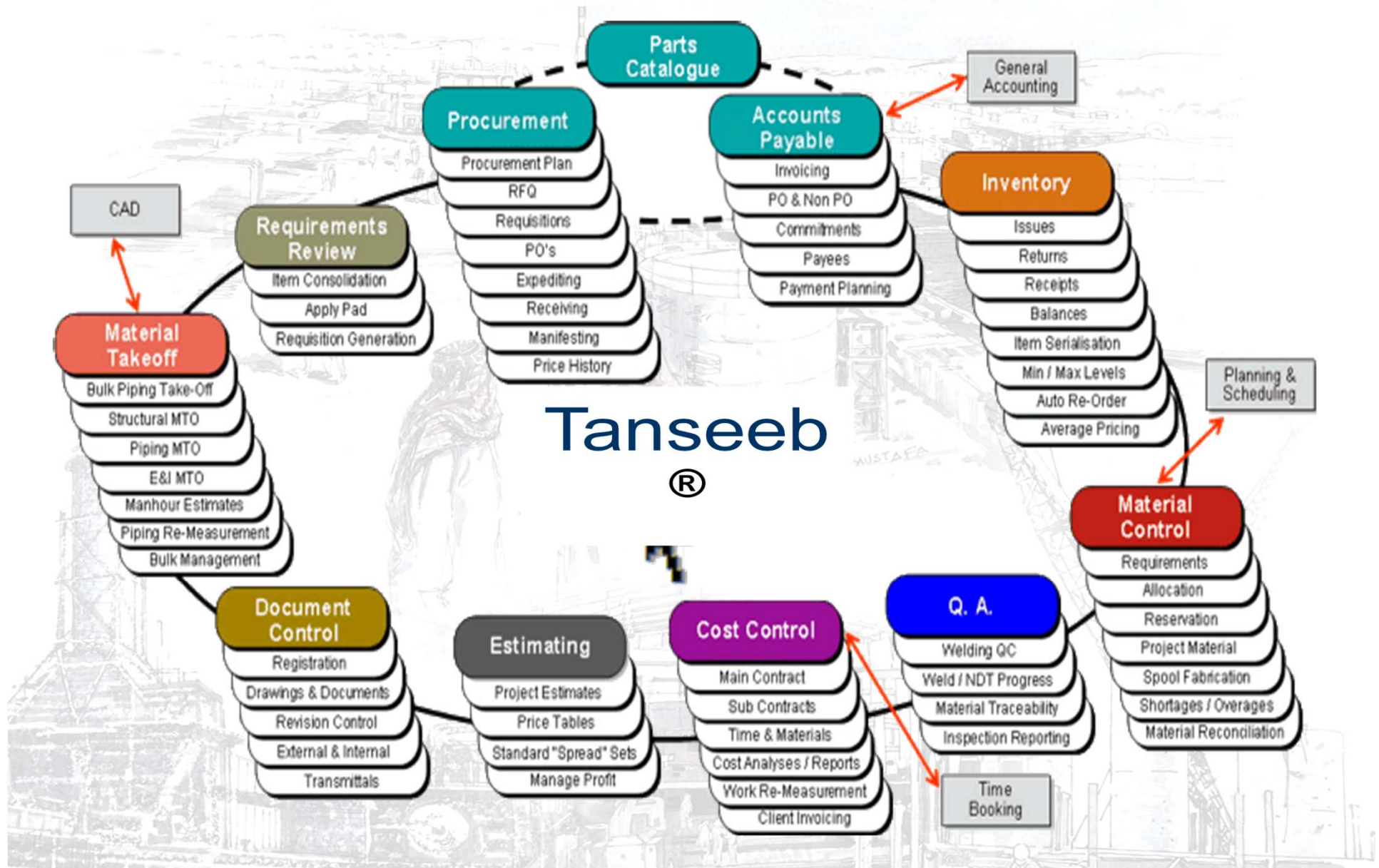
# Project Management - Project Life Cycle



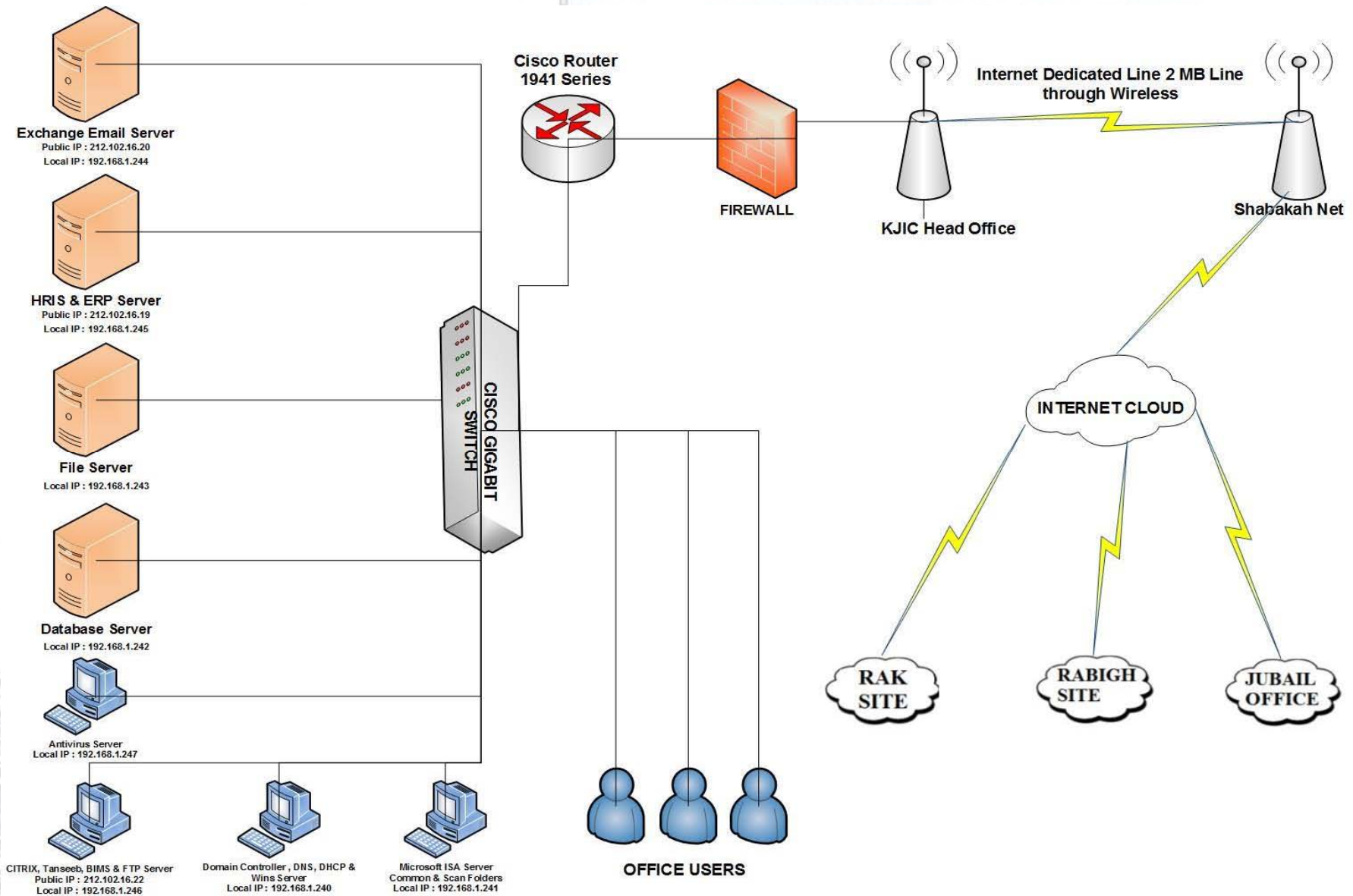
# Project Management - System



# Project Management - ERP System



# Project Management - Network Integration



# Group Human Resource Profile

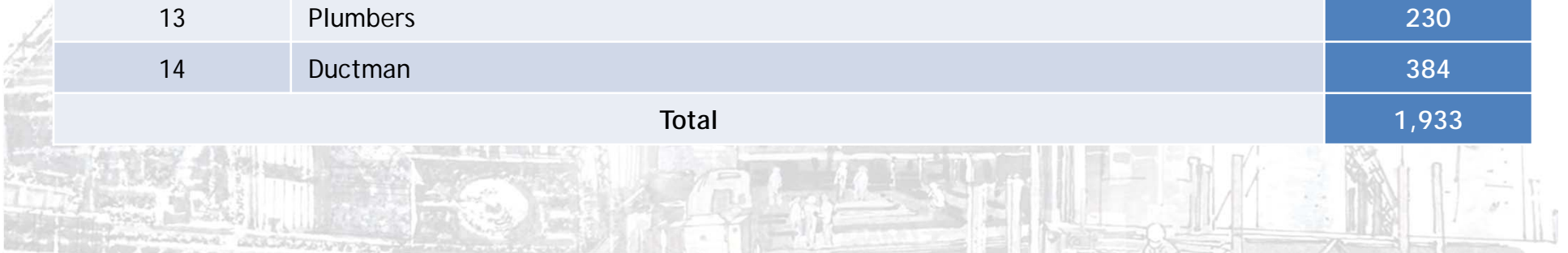


Serial No.	Craft/Trade	Nos.
<b>INDIRECT MANPOWER</b>		
1	Project Managers	5
2	Site Managers	3
3	Construction Manager	5
4	Project Engineer	2
5	Site Engineer	55
6	QA/QC Engineer	6
7	HSE Engineer	7
8	Planning Engineer	9
9	HVAC Design Engineer	5
10	Electrical Design Engineer	5
11	Plumbing Design Engineer	8
12	Low Current System Design Engineer	1
13	Mechanical Engineer	2
14	Proposal Engineer	6
15	QC Inspectors	43
16	HSE Inspectors	31
17	Electrical Supervisor	33
18	Mechanical Supervisor	74
19	Draftsman	18
20	Procurement	8
21	Store Staff	30
22	Quantity Surveyor	7
23	Document Controller	7
24	Material Coordinator	11
25	Project Support Staff	157
<b>Total</b>		<b>538</b>

# Group Human Resource Profile

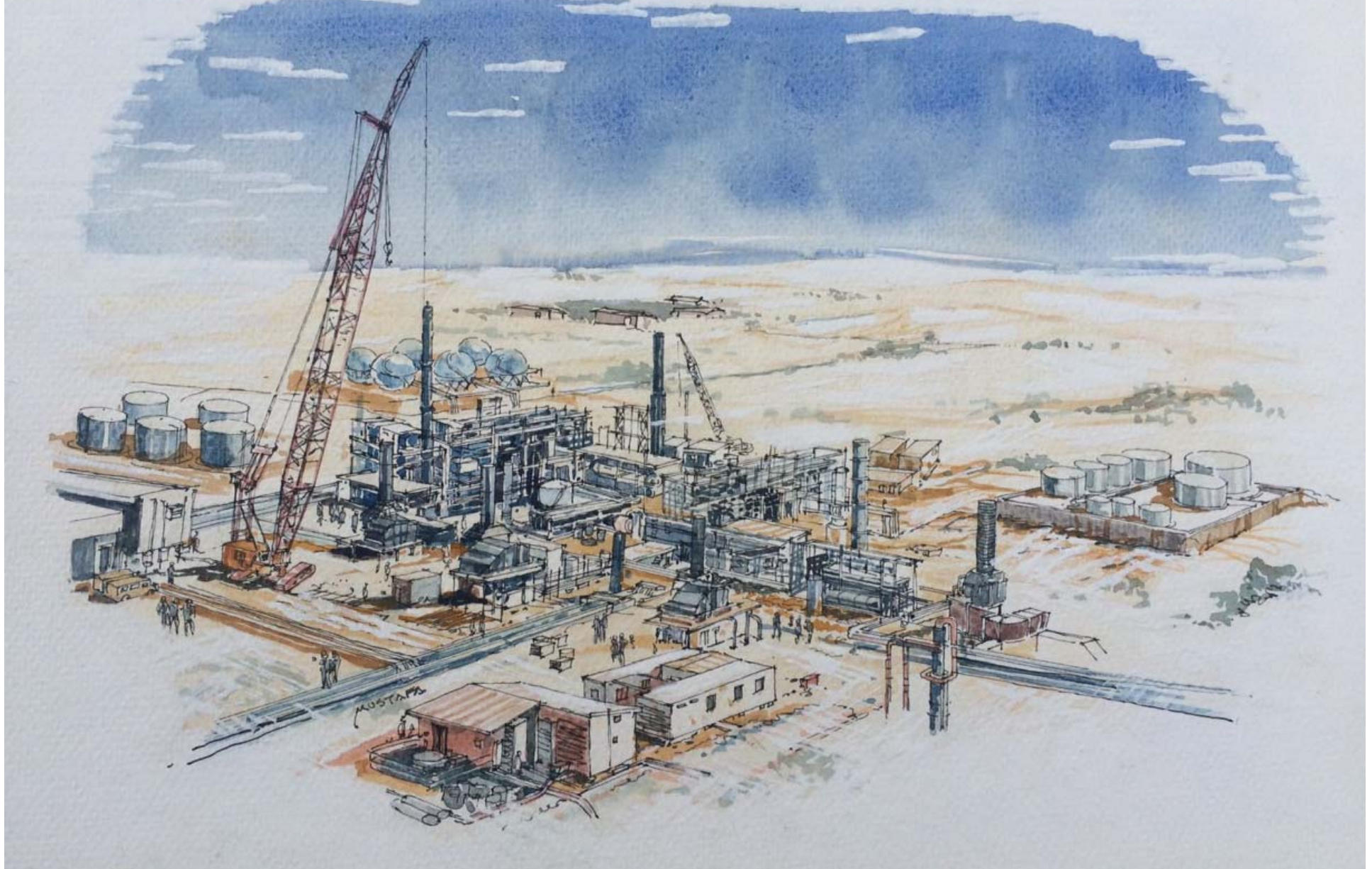


Serial No.	Craft/Trade	Nos.
DIRECT MANPOWER		
1	Welders	93
2	Fabricators	88
3	Fitters	182
4	Riggers	130
5	Scaffolders	69
6	Sand Blasters	15
7	Helpers	228
8	Equipment Operators	22
9	Painters	31
10	Drivers	42
11	Millwright	2
12	Electricians	417
13	Plumbers	230
14	Ductman	384
Total		1,933





# Capabilities & Areas of Synergy





# PIPING

(Carbon Steel, Alloy Steel, Stainless Steel, Reinforced Thermosetting Resin and Glass Reinforced Plastic)





# Piping

**Owner:** Rabigh Arabian Water and Electricity Company

**Client:** SEPCO III Electric Power Construction Corporation

**Project:** 1,260 MW Independent Power Plant

**Scope:** Piping prefabrication and erection of 150,000 Dia Inches.



# Piping



**Owner:** Al-Mourjan for Electricity Production Co.

**Client:** Samsung C&T Corporation

**Project:** Rabigh 2 Independent Power Plant

**Scope:** Piping Prefabrication and Erection.

- Size Range = 0.5" to 30"
- Total Dia. Inches = 187,000
- Total Support Fab/Erec. = 225 Tons
- Total Valves Installation = 336



# Piping



**Owner:** Saudi Aramco Total Oil Refinery and Petrochemical Company

**Client:** MMG / Daelim

**Scope:** Piping Prefabrication (2" ~24")

- 48,000 Dia Inches (CS, AS, SS)



**Owner:** Saline Water Conversion Corporation

**Client:** SEPCO III

**Project:** Ras Al Khair Power & Desalination Plant  
(2,400 MW)

**Scope:** Piping prefabrication and erection

- 120,000 Dia Inches (CS, AS, SS)





# Piping

**Owner:** Arabian Chemical Company Ltd  
**Client:** Arabian Chemical Company Ltd  
**Project:** Styrene Monomer Pipeline Project  
**Scope:** EPCC of 12 KM 3" Styrene Monomer Pipeline Through RC Corridor. Including Civil, Mechanical and E&I Works.  
Total 7,000 Dia Inch.

**Owner:** Saudi Chevron Phillips  
**Client:** Saudi Chevron Phillips  
**Project:** JCP Plant Utility Area  
**Scope:** PCC of 1400M 6" Benzene Import Pipeline Including Civil, Mechanical, E&I.



# Piping

**Owner:** General Presidency for the Affairs of the Grand Mosque and the Prophet's Mosque

**Client:** Advanced Vision / Saudi Binladin Group

**Project:** Haram - Chilled Water and Utility Lines

**Scope:** Installation of piping networks in utility culvert;

- Chilled water (DN 1500, 1200, 900)
- Domestic water (DN 1800, 800, 500)
- Fire water (DN 400)
- Zamzam (DN 350, 200)
- Drinking water (DN 350, 200)



# Piping



**Owner:** SABIC

**Project:** Recover of Boiler CBD to Raw Water System

**Scope:** Supply of Material, Fabrication, Erection, Testing & Commissioning of TIE-IN, TP-01 & TP-02, Piping and accessories for Recovery of boiler CBD to raw water system at IBN AL-BAYTAR plant

**Owner:** SABIC

**Project:** LSTK for Add. line for sending waste water - IBB Utility

**Scope:** Supply of material, installation, testing and commissioning of "Mechanical 3 way valve at the discharge of the waste water pump along with additional piping at IBB Utilities.

**Owner:** Hadeed (SABIC)

**Scope:** Installation of 250 Dia Inch Drain Piping in UT-CCL.

**Owner:** Safco (SABIC)

**Scope:** Installation of steam header. Piping Installation of 2,200 Dia Inch





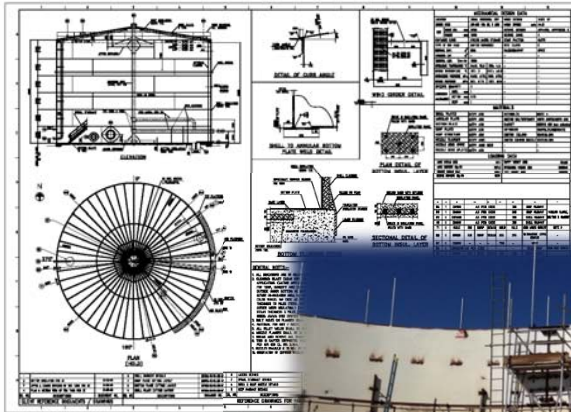
# TANKAGE

(Carbon Steel, Alloy Steel and Stainless Steel)





# Tankage



**Owner:** Royal Commission for Jubail and Yanbu  
**Client:** Azmeel Contracting & Construction Company  
**Project:** Jubail Industrial College At Royal Commission  
**Scope:** EPC of Thermal Energy Storage Tank (15,000TRH).

**Owner:** Saudi Kayan

**Client:** Winteco Premier Co. Ltd.

**Project:** Amine Storage Tanks

**Scope:** Fabrication and erection of:

- 18 SS 304 Tanks: Dia 5.5 M
- 01 SS 316L Tank: Dia 5.7 M
- 01 CS SA-283 Tank: Dia 4.3 M
- 03 SS 316L Tanks: Dia 13.5 M



# Tankage



**Owner:** Saudi Aramco Total Oil Refinery and Petrochemical Company

**Client:** Nesma and Partners Contracting Co.

**Project:** Acid Storage Tanks

**Scope:** Field installation of 3 Nos. Carbon Steel Acid Tanks of Diameter 11m and height 11m.



TANK A & B



TANK A



**Owner:** Saudi Aramco Total Oil Refinery and Petrochemical Company

**Client:** Westech Engineering USA

**Project:** Bio Sludge Treatment Plant

**Scope:** Supply, Fabrication & Installation of 2 Nos. tanks. The outer dia of the tank is 39 meters and Job involves CS & SS 304 & 316 Material.

# Tankage



**Owner:** Al-Mourjan for Electricity Production Co.

**Client:** Samsung C&T Corporation

**Project:** Rabigh 2 Independent Power Plant

**Scope:** Fabrication and Installation of:

- Fuel Oil Tanks (2 Nos.) - 25,042 Cu.m
- Desalination Water Tanks (2 Nos.) - 16,875 Cu.m
- Service Water Tanks (2 Nos.) - 509 Cu.m
- Demineralized Water Tanks (2 Nos.) - 4,086 Cu.m
- Fire Fighting Water Tank (1 No.) - 2,427 Cu.m
- Total Tonnage = 2,105 Tons





# STATIC EQUIPMENT



# Static Equipment



**Owner:** Saline Water Conversion Corporation

**Client:** SEPCO III

**Project:** 2,400 MW Ras Al Khair Power & Desalination Plant

**Scope:** Erection of HRSGs in Block 30 and Installation of Gas Stations

- Total Equipment Weight - 1,500 Ton
- Testing & Pre-commissioning



# Static Equipment



**Owner:** Rabigh Arabian Water and Electricity Company

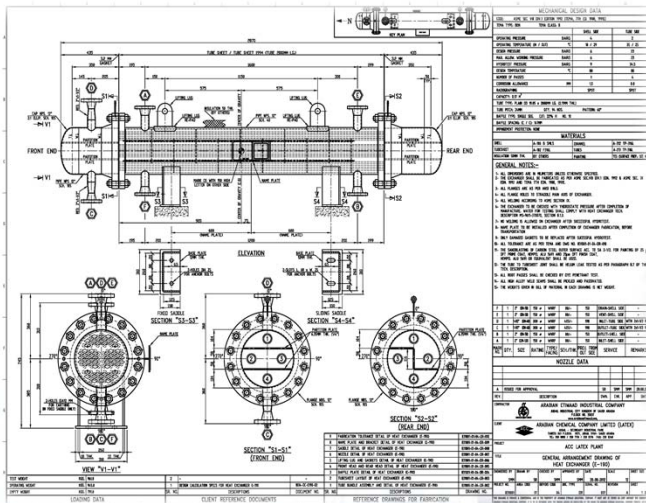
**Client:** SEPCO III

**Project:** 1,260 MW Power Plant

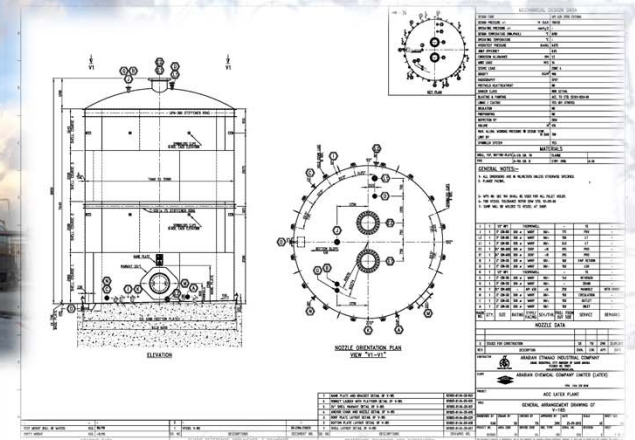
**Scope:** Installation of Fuel Oil System piping & associated equipment.  
Installation of Electro Static Precipitator Equipment, ID Fan, FLUE Gas Desulphurization installation & GGH System including booster pumps, aeration pumps etc.  
Complete with commissioning.



# Static Equipment

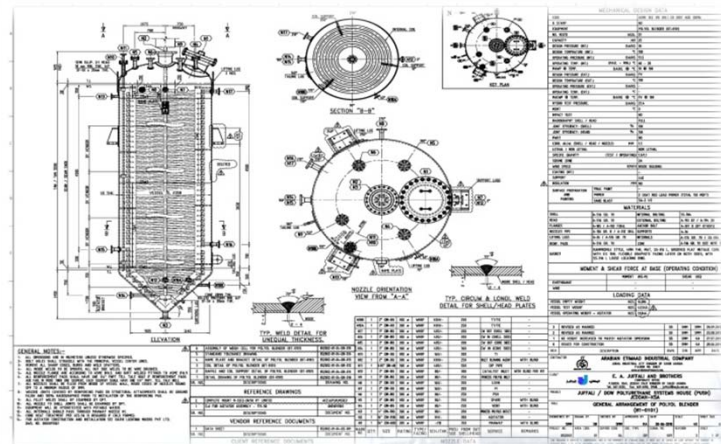


- Owner:** Arabian Chemical Company Ltd  
**Client:** Arabian Chemical Company Ltd.  
**Project:** ACCL Latex Plant  
**Scope:** Engineering, Manufacturing and Supply of
- 02 Heat Exchangers
  - Butadiene Pressure Vessel
  - Styrene Storage Tank





# Static Equipment



**Owner:** Arabian Chemical Company Ltd

**Client:** Arabian Chemical Company Ltd

**Project:** Polyurethane Blending Plant

**Scope:** Engineering, Procurement & Manufacturing Pressure Vessels.

Piping Spools Pre-fabrication.

Construction & Commissioning of Polyurethane System.





# Static Equipment

**Owner:** Ma'aden - Saudi Aramco  
**Client:** Pall Corporation  
**Project:** Sales Gas Black Powder Filter Station  
**Scope:** Installation of Sales Gas Black Powder Filter Station at Ras Al-Khair on the new KARZTG-2 Pipeline going to Ma'aden Industrial City.



# Static Equipment



**Owner:** Saudi Arabian Mining Company (Ma'aden)

**Client:** Five Solios

**Project:** Ma'aden Aluminum Smelter Plant

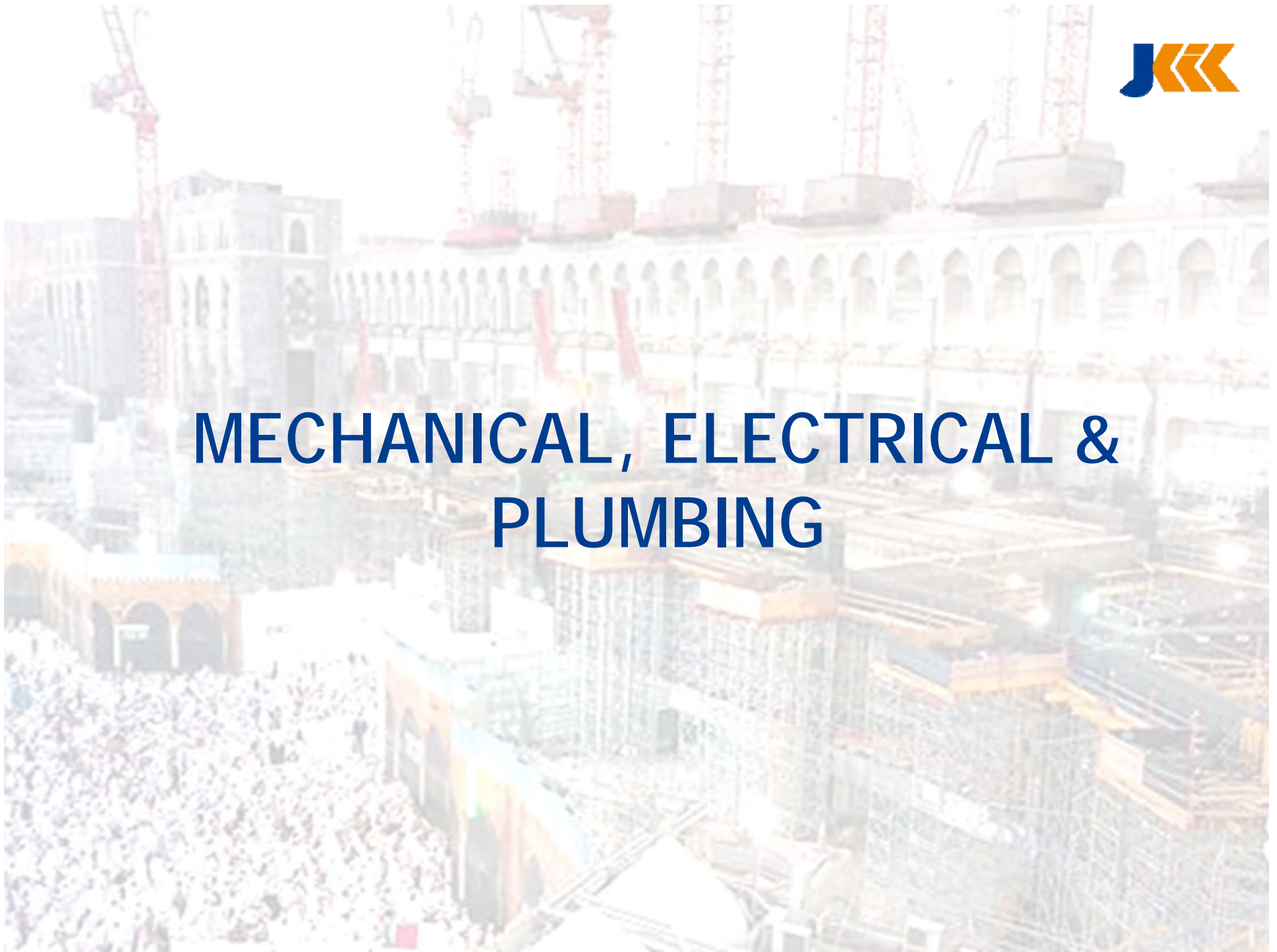
**Scope:** Manufacturing of equipment for gas treatment centers at Aluminum Smelter Plant.

- Number of Stacks: 04
- Number of Pieces: 12
- Total Weight: 597 Ton
- Heaviest Piece: 80 Ton, L=22m, W=8m
- Painting: 5,225 m<sup>2</sup>
- NDT: 10% RT of T-Joints  
10% RT of Vert. and horizontal Joints  
UT Bottom Flange & Beam splice Joint  
10% DPT of Fillet Joints





# MECHANICAL, ELECTRICAL & PLUMBING



# Mechanical, Electrical & Plumbing



**Owner:** General Presidency for the Affairs of the Grand Mosque and the Prophet's Mosque

**Client:** Advance Vision / Saudi Binladin Group

**Project:** Ajjad Cooling Plant Project

**Scope:** Turnkey set up of 15000 TR air conditioning plant to accommodate the increase in cooling requirements of Massa in Haram, Makkah

**Owner:** General Presidency for the Affairs of the Grand Mosque and the Prophet's Mosque

**Client:** Advance Vision / Saudi Binladin Group

**Project:** Security Building Project

**Scope:** MEP works for 23 story Security Building in Makkah.





# Mechanical, Electrical & Plumbing

**Owner:** General Presidency for the Affairs of the Grand Mosque and the Prophet's Mosque

**Client:** Advance Vision / Saudi Binladin Group

**Project:** Water & Fire Water Domestic Network In Shamiyah Project Plot 2

**Scope:** PLUMBING SYSTEM:

- Installation of Storm water cast Iron pipes (size from 100 to 200 mm) including all fixing material
- Installation of Storm water Ductile Iron pipes (size from 250 to 400 mm) including all fixing material
- Installation of plumbing specialties and drains

FIRE PROTECTION SYSTEM:

- Installation of Stainless steel fire distribution pipes, with all required fittings and supports
- Installation of Fire water Ductile Iron pipes (size from 250 to 400 mm) including all fixing material
- Installation of fire zone control valves, gate valves, pressure reducing valves
- Installation of Automatic supervised wet sprinkler system
- Installation of fire hose cabinets and landing valves
- Installation of portable fire extinguishers CO2 and dry chemical extinguishers
- Installation of Siamese connections complete with check valves
- Installation of fire hydrants with all accessories





## Mechanical, Electrical & Plumbing

**Owner:** General Presidency for the Affairs of the Grand Mosque and the Prophet's Mosque

**Client:** Advance Vision / Saudi Binladin Group

**Project:** MEP Construction In Zone # 4 On Shamiyah Project

**Scope:** Installation of HVAC system, chilled water piping, plumbing, firefighting and electrical works. Include Air Handling Units from 51Kw to 861Kw, Heat recovery Air Handling Units from 323Kw to 627Kw, Fan Coil Units form 1.3Kw to 24.5 Kw, Exhaust Fans up to 53,000 L/s.



**Owner:** General Presidency for the Affairs of the Grand Mosque and the Prophet's Mosque

**Client:** Advance Vision / Saudi Binladin Group

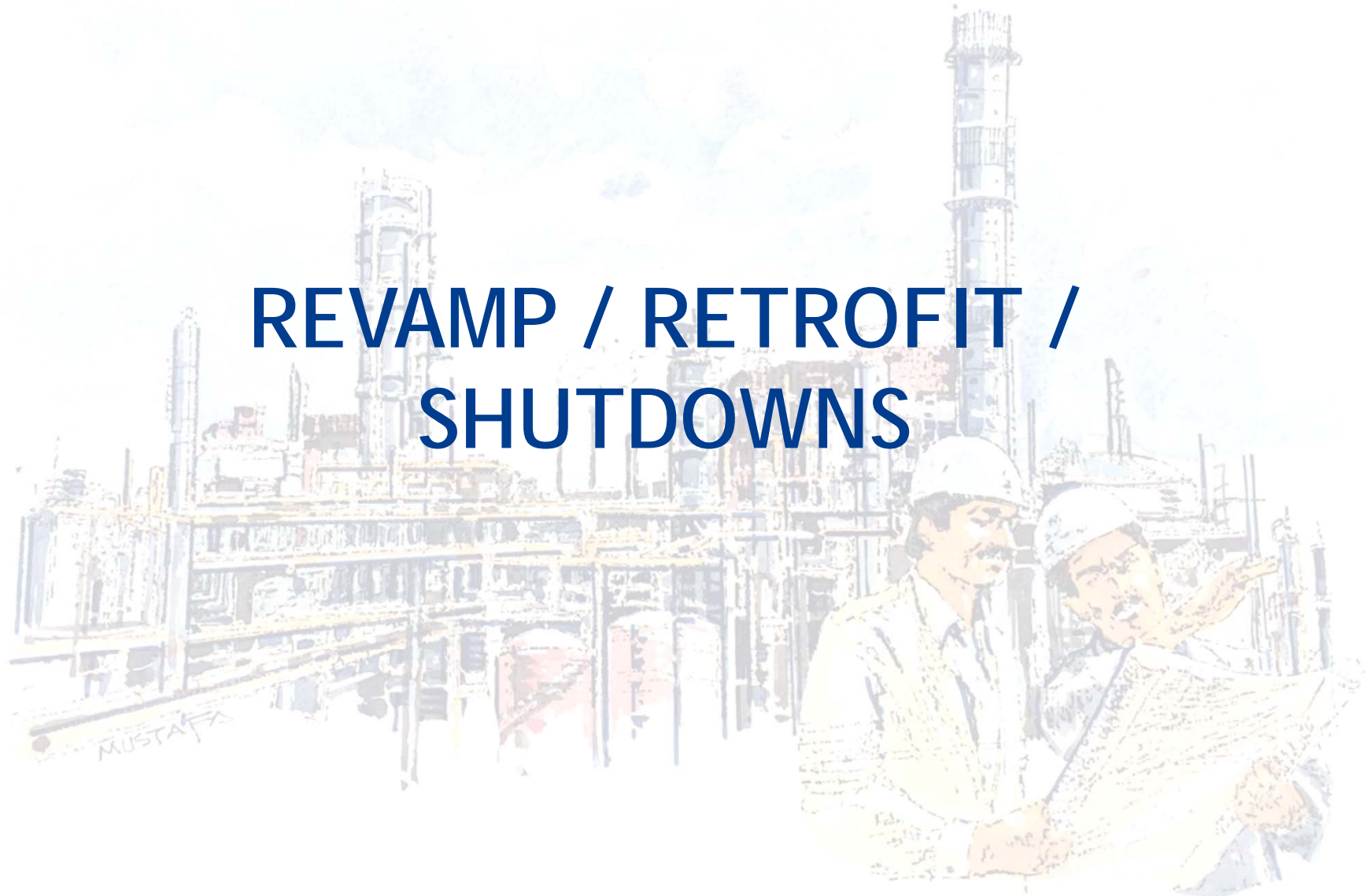
**Project:** Makkah First Ring Road Project

**Scope:** MEP works including tunnel, surface roads and bridges for first ring road in Makkah city.





# REVAMP / RETROFIT / SHUTDOWNS







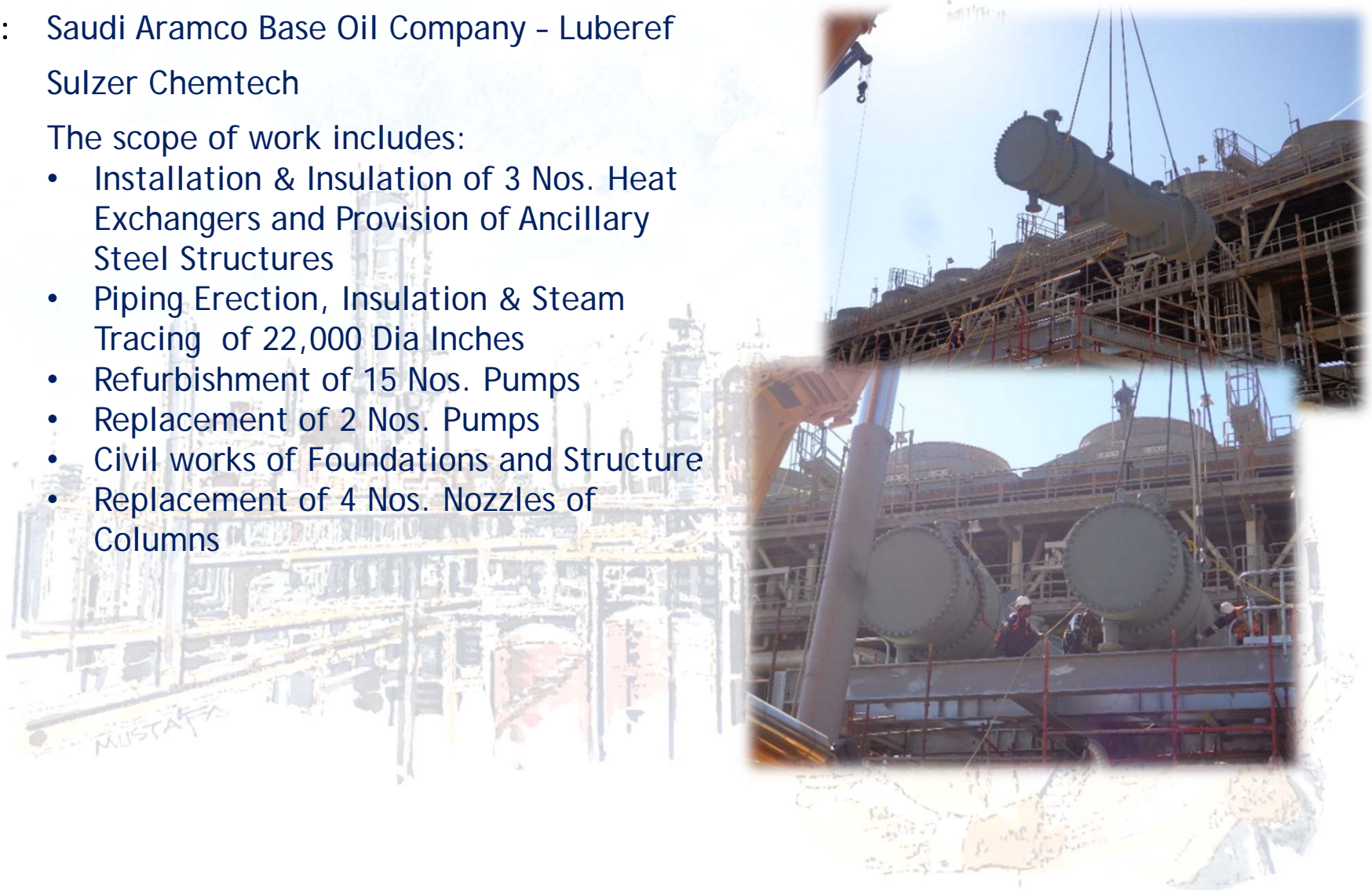
# Revamp / Retrofit

**Owner:** Saudi Aramco Base Oil Company - Luberef

**Client:** Sulzer Chemtech

**Scope:** The scope of work includes:

- Installation & Insulation of 3 Nos. Heat Exchangers and Provision of Ancillary Steel Structures
- Piping Erection, Insulation & Steam Tracing of 22,000 Dia Inches
- Refurbishment of 15 Nos. Pumps
- Replacement of 2 Nos. Pumps
- Civil works of Foundations and Structure
- Replacement of 4 Nos. Nozzles of Columns





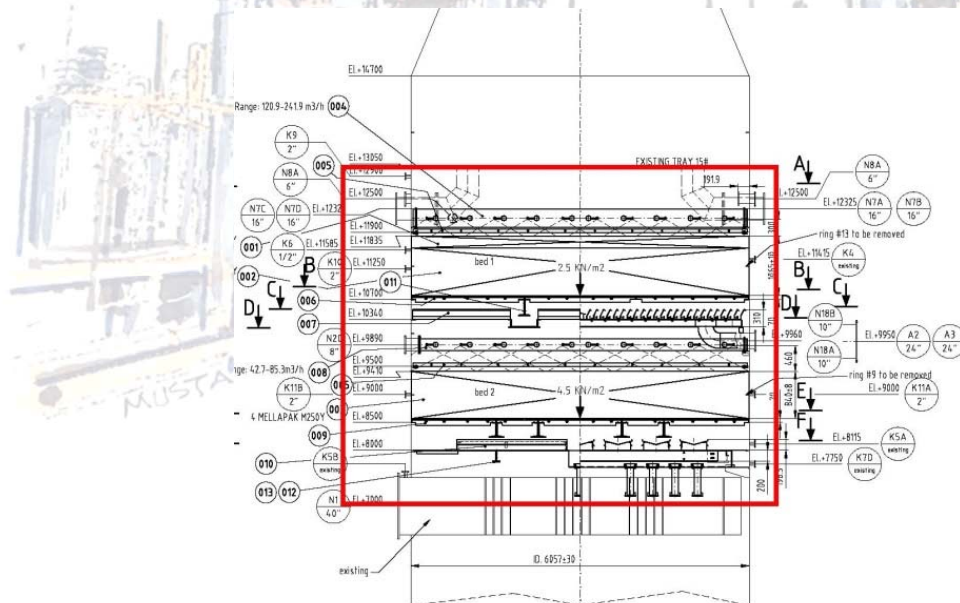
# Revamp / Retrofit

Owner: Saudi Aramco Shell Refinery Company - Sasref

Client: Sulzer Chemtech

Scope: The scope of work includes:

- Column Revamp replacement of 13 Nos. of nozzles for upgradation during annual Turnaround.
- Replacement of 10", 16", and 20" nozzles.
- Adoption of TOFD procedure instead of radiography as an alternate to save time to complete the works during turnaround window.



# Shutdown & Turnarounds



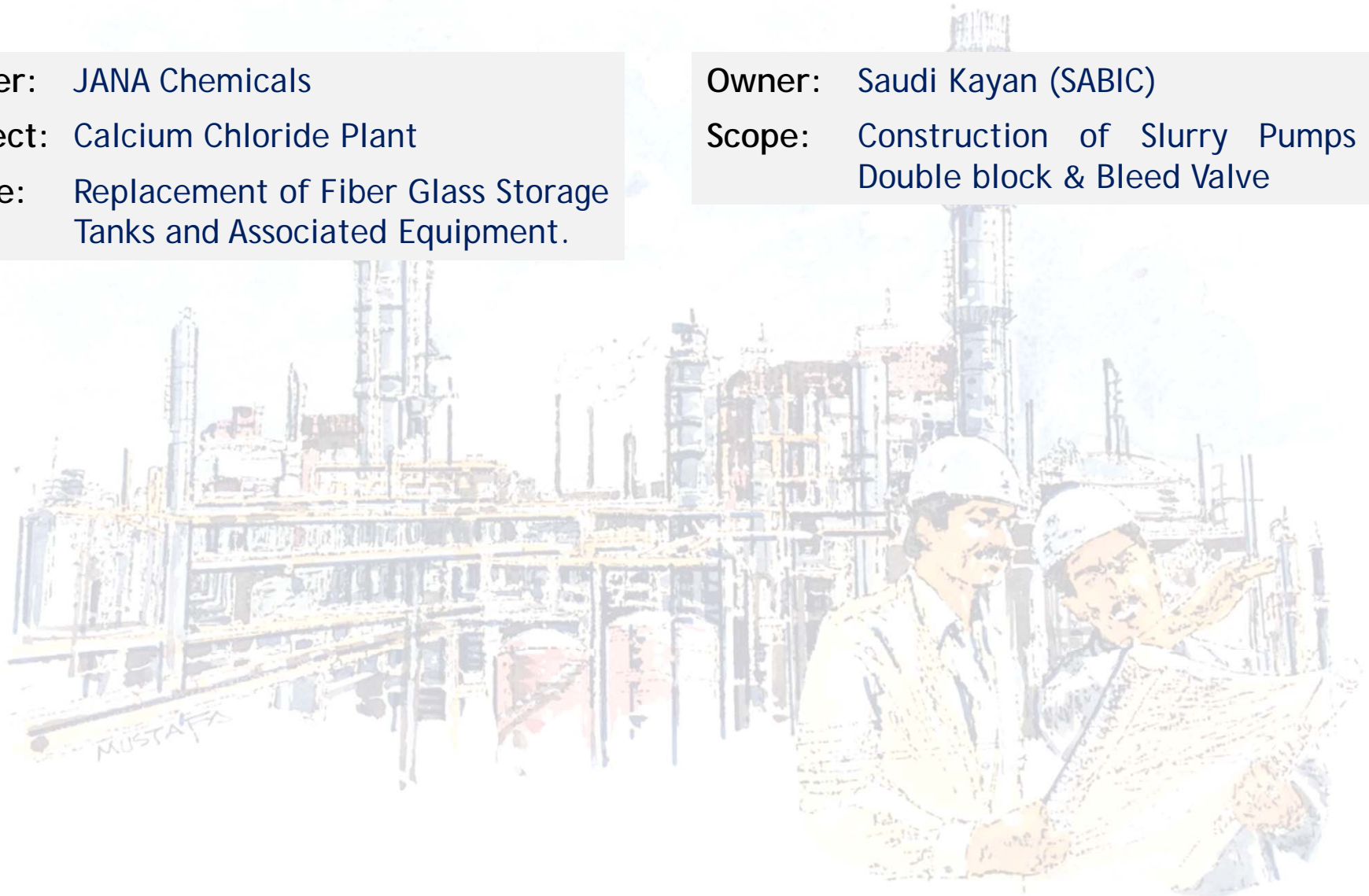
**Owner:** JANA Chemicals

**Project:** Calcium Chloride Plant

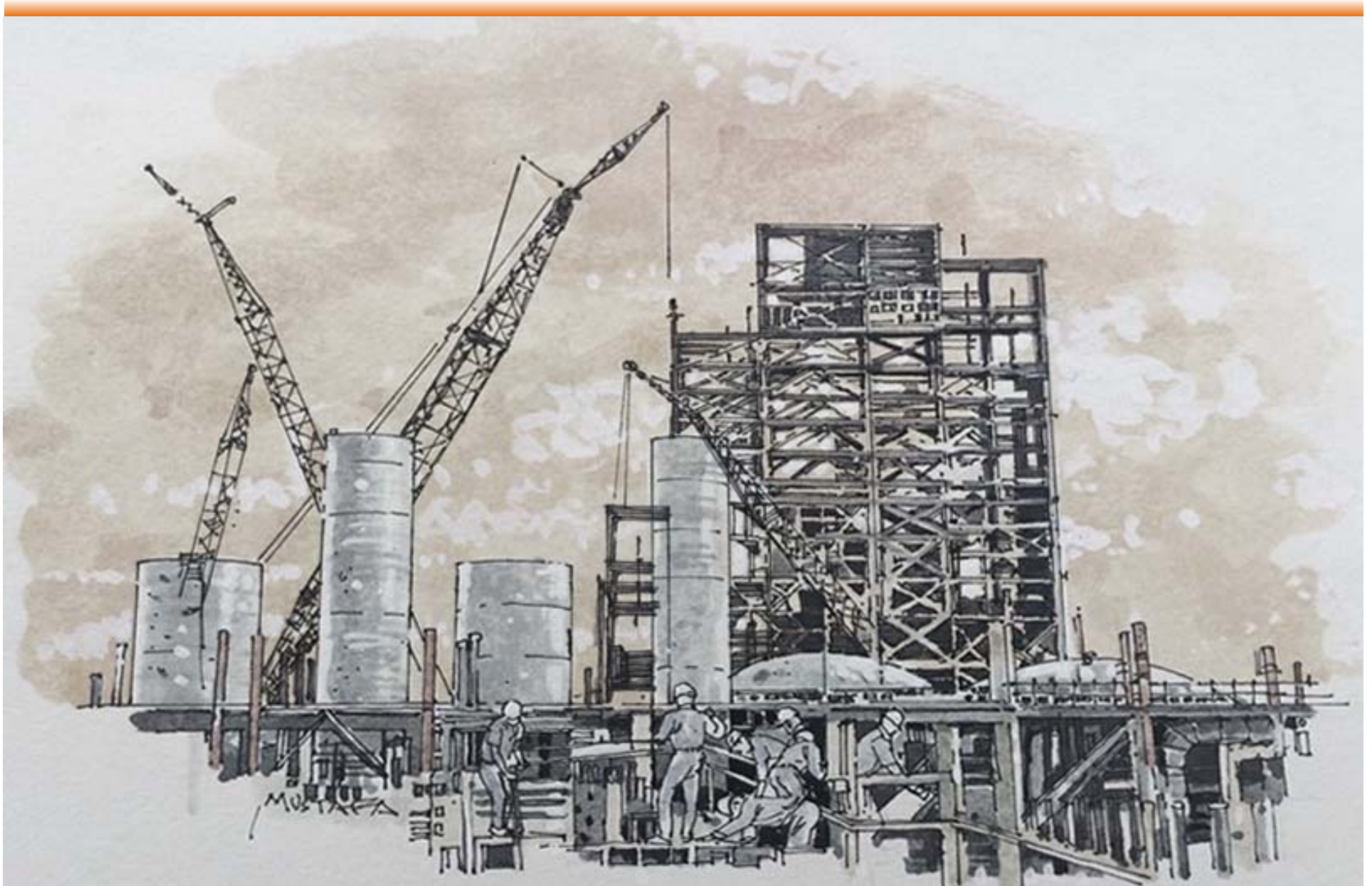
**Scope:** Replacement of Fiber Glass Storage Tanks and Associated Equipment.

**Owner:** Saudi Kayan (SABIC)

**Scope:** Construction of Slurry Pumps  
Double block & Bleed Valve



# Experience Profile



# Ongoing Projects



**Owner:**  
Saline Water Conversion Corporation (SWCC)

**Project:**  
RAS AL KHAIR Power and Desalination Plant - Phase 1 Package (P) Power Plant

**Scope:**  
Mechanical, Electrical, I & C Erection Works of complete Fuel Gas and Backup Fuel Oil System for 2400 MW Combined Cycle Power Plant including

- Pipe Prefabrication - 8,000m.
- Piping erection - 20,000m
- Equipment erection - 1,500 Ton
- Testing & Pre-commissioning



**Owner:**  
Al-Mourjan for Electricity Production Company

**Project:**  
Rabigh 2 Independent Power Plant

**Scope:**

- Piping Prefabrication and Erection - 180,000 Dia Inches
- Tank Prefabrication and Erection of Nine (9) Nos. Tanks



**Owner:**  
Royal Commission for Jubail and Yanbu

**Project:**  
SWC3 Project

**Scope:**  
Fabrication and Erection of Storage Tanks - Two (02) Nos. Tanks



**Owner:**  
SABIC

**Scope:**  
Construction of Slurry Pumps Double block & Bleed Valve



**Owner:**  
SABIC

**Scope:**  
Installation of steam header



**Owner:**  
SABIC

**Scope:**  
Installation of Drain Piping in UT-CCL

# Ongoing Projects (MEP Works)



## General Presidency for Affairs of Grand Mosque and Prophet's Mosque

### Project:

Shamiyah Third Expansion Zone 4

### Scope:

Construction of MEP works in Zone # 4 in Haram Building Makkah:

- Increasing air Handling Units from 51Kw to 861Kw
- Increasing heat recovery Air Handling Units from 323Kw to 627Kw
- Increasing fan coil units from 1.3Kw to 24.5 Kw
- Installation of air distribution materials up to 4500 mm
- Installation of chilled water black steel pipes up to 1500 mm

### Project:

Makkah First Ring Road Works

### Scope:

Supply, installation, testing & commissioning, of electromechanical works on surface roads, bridges & connecting roads

### Project:

Mechanical Works of Pedestrian Tunnels Shamiyah Third Expansion of Holy Haram

### Scope:

Installation, testing & commissioning of Mechanical services.

### Project:

Makkah First Ring Road Tunnels

### Scope:

Supply, installation, testing & commissioning of MEP works in Qushashiyah, Kudai & Birkha Tunnels.

### Project:

Security Building, Plot-2 Project

### Scope:

Supply, installation, testing & commissioning of MEP works in Security Building Plot No. 2



# Completed Projects

End-User	Client	Project Description	Location	Year Completed
Ibn Al-Baytar Utility Plant - SAFCO	SABIC	Supply of Material, Fabrication, Erection, Testing & Commissioning of TIE-IN, TP-01 & TP-02, Piping and accessories for Recovery of boiler CBD to raw water system at IBN AL-BAYTAR plant	Jubail	2014
General Presidency for the Affairs of the Grand Mosque and the Prophet's Mosque	Advance Vision / Saudi Bin Laden Group	Piping works for utility systems. Chilled water, Zam Zam and other utilities. Ranging from DN1500 to DN100	Makkah	2014
Royal Commission of Jubail & Yanbu	Azmeel Contracting and Construction Co.	Design, Supply, Fabrication & Installation of Thermal Energy Storage Tank (15,000TRH) for Jubail Industrial College at Royal Commission. The scope of work also includes testing and commissioning of the tank.	Jubail	2014
Ibn Al-Baytar Utility Plant	SABIC	Supply of material, installation, testing and commissioning of "Mechanical 3 way valve at the discharge of the waste water pump along with additional piping at IBB Utilities	Jubail	2014
Saudi Arabian Oil Company (Saudi Aramco) /Saudi Aramco Base Oil Company (LUBEREF)	SULZER Chemtech	<ul style="list-style-type: none"> <li>• Shop Pipe Spool Manufacturing of CS, AS</li> <li>• Manufacturing of Steel Structure and Pipe Supports</li> <li>• Civil Works &amp; Erection for Turnaround of Vacuum Distillation Unit (VDU)</li> </ul>	Yanbu	2014



## Completed Projects

End-User	Client	Project Description	Location	Year Completed
General Presidency for the Affairs of the Grand Mosque and Prophet's Mosque	Advance Vision / Saudi Bin Laden Group	<p>Ajyad Cooling Plant</p> <ul style="list-style-type: none"> <li>• Installation, testing &amp; commissioning of HVAC system, firefighting system and plumbing system.</li> <li>• Electrical and low current works.</li> </ul>	Haram - Makkah	2013
ACWA Power / Rabigh Arabian Water and Electric Company	SEPCO III Electric Power Construction Corporation	Fuel Oil System piping & associated equipment for 2X660 MW Power Plant. Pre-fabrication of piping, pipe supports, installation work, painting, hydro test & commissioning. Installation of ESP Equipment, ID Fan, FGD installation & GHH System including booster pumps, aeration pumps etc. Complete with commissioning for 2X660 MW Power Plant.	Rabigh	2013
Saudi Arabian Mining Company (Ma'aden)	Bechtel / Five Solios	Pre-Assembly and Field Erection Work for GTC-4 at Aluminum Smelter Plant.	Ras Al Khair	2013
Saudi Aramco Total Refining and Petrochemical Company (SATORP)	Technip / Nesma and Partners Contracting Company	Piping Installation including valves and online instruments work on Pipe Racks and around Equipment ranging 2" - 30" covering CS, SS-304 & SS-316 Material for FCC Unit 171&181. Total piping erection of 26,000 dia-inch.	Jubail 2	2013
Saudi Arabian Mining Company (Ma'aden) - Saudi Arabian Oil Company (Saudi Aramco)	Pall Corporation	Installation of Sales Gas Black Powder Filter Station at Ras Al-Khair on the new KARZTG-2 Pipeline going to Ma'aden Industrial City. The scope covers Electro-Mechanical Installation and Commissioning including associated Piping and Instrumentation work.	Ras Al Khair	2013





## Completed Projects

End-User	Client	Project Description	Location	Year Completed
Arabian Chemical Company (Latex) Ltd.	Arabian Chemical Company (Latex) Ltd.	Design, Supply, Fabrication & Installation of 2 Nos. Storage Tanks (Vertical & Horizontal) and 2 Nos. of Heat Exchangers	Jubail	2013
Saudi Chevron Phillips	Saudi Chevron Phillips	Supply, Fabrication & Installation of 6" Benzene import Pipeline including Civil, Mechanical, E&I and Commissioning work in JCP Plant.	Jubail	2013
Saudi Arabian Mining Company (Ma'aden)	Fives Solios	Manufacturing of 4 Nos. Stacks with a diameter of 7.8m, height 52m and weighing 140 tons each for Ras Az Zawr Aluminum Smelter Project.	Ras Al-Khair	2013
Saudi Aramco Total Refining and Petrochemical Company (SATORP)	Westech Engineering USA	Supply, Fabrication & Installation of Bio Sludge Treatment Plant. The outer dia of the tank is 39 meters and Job involves CS & SS 304 & 316 Material.	Jubail	2013
Saudi Aramco Total Refining and Petrochemical Company (SATORP)	Technip / Nesma and Partners Contracting Company	Field installation of 3 Nos. Carbon Steel Acid Tanks of Diameter 11m and height 11m	Jubail	2012
Arabian Chemical Company (Latex) Ltd.	Arabian Chemical Company (Latex) Ltd.	Engineering, Procurement & Construction (Civil, Mechanical and E & I) including commissioning of 12 KM 3" Styrene Monomer Pipeline through RC Corridor.	Jubail	2012

# Completed Projects



End-User	Client	Project Description	Location	Year Completed
Saudi Aramco Shell Refinery Company (SASREF)	JGC Gulf International Company Ltd.	Steam Tracing work on approx. 5,000 meter of Process Piping with 100% RT including Hydro test. Scope of work also includes Reinstatement work of Process Piping after Hydro test including Commissioning assistance.	Jubail	2012
Saudi Chevron Phillips	Saudi Chevron Phillips	Design, Procurement & Construction (Civil, Mechanical and E&I) including commissioning of Insulated Styrene Pipeline from Storage Tank to RC Corridor for onward delivery to ACCL Plant.	Jubail	2012
Saudi Aramco Total Refining and Petrochemical Company (SATORP)	MMG / Daelim	Piping (2" - 24") Spool Manufacturing (CS, AS, SS) Quantity 48,000 dia inches	Jubail	2011
DOW-Juffali JV	Juffali Chemical Company	Engineering, Procurement & Construction (Civil, Mechanical and E & I) for the Poly Urethane Blending Plant	Jeddah	2011
Jana Chemicals	Jana Chemicals	Replacement of 02 Nos. Fiber Glass Storage Tanks and Associated Equipment during Plant Shutdown	Jubail	2011

# Completed Projects



End-User	Client	Project Description	Location	Year Completed
Arabian Chemical Company (Latex) Ltd.	Arabian Chemical Company (Latex) Ltd.	Revalidation, Modification & Painting of Butadiene Pipeline in Royal Commission Corridor.	Jubail	2011
Saudi Aramco Shell Refinery Company (SASREF)	SULZER Chemtech	Column Revamp Services during Annual Turnaround	Jubail	2011
Saudi Kayan / SABIC	Winteco Premier Co. Ltd.	Manufacturing and Supply of 23 Nos. Amine Stainless Steel Storage Tank.	Jubail	2011



# Client Appreciation Letters & Certificates



SEPCOIII ELECTRIC POWER CONSTRUCTION CORPORATION BRANCH RABIGH 2\*660 MW IPP PROJECT

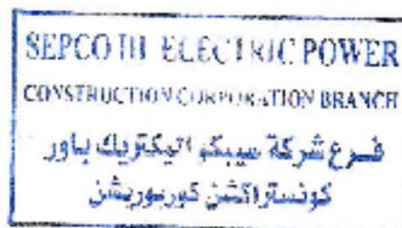
## APPRECIATION ON FUEL OIL SYSTEM COMPLETION

SEPCOIII wishes to extend its sincere appreciation to ARABIAN EILMAAD INDUSTRIAL COMPANY on the successful completion of FUEL OIL SYSTEM ERECTION in RABIGH 2\*660MW IPP Project. It's the results of the efforts of AEIC employees both site team and headquarter, who focus on schedule, quality and safety during the entire process.

SEPCOIII is expecting the same passion in the 2nd project of ESP-FGD Package which is ongoing and need the same approach AEIC followed in the Fuel Oil System.

Thanks for your continued efforts and best regards!

For and on behalf of SEPCOIII



# Client Appreciation Letters & Certificates



SEPCOIII ELECTRIC POWER CONSTRUCTION  
CORPORATION BRANCH RABIGH 2\*660 MW IPP PROJECT

## APPRECIATION 2#ESP & 2#FGD COMPLETION

SEPCOIII wishes to extend its sincere appreciation to ARABIAN ETIMAAD INDUSTRIAL COMPANY(AEIC) on the successful completion of 2# Electrostatic Precipitator ( ESP ) and 2# Flue Gas De-dusting ( FGD ) Package erection in RABIGH 2\*660MW IPP Project. It's the results of the efforts of AEIC employees both site team and headquarter, who focus on schedule, quality and safety during the entire process.

Thanks for your continued efforts and best regards!

For and on behalf of SEPCOIII



# Client Appreciation Letters & Certificates



# Client Appreciation Letters & Certificates



# Contact Us



## CORPORATE OFFICE - KJIC

### Coordinates:

26.311739, 50.212077

### Address:

Fluor Arabia Limited,  
P. O. Box 3543,  
Al Khobar 31952,  
Saudi Arabia.

T: + 966 13 882 3399

F: + 966 13 882 9944



## GROUP HEADQUARTER

### Coordinates:

21.545962, 39.174361

### Address:

Madinah Road, Kilo 6  
P.O. Box 1049,  
Jeddah 21431  
Saudi Arabia

T: + 966 12 667 2222 Ext:1594

F: + 966 12 660 0119



**Thank You !**

